

# CITY OF KELOWNA

## BYLAW NO. 9701

### Amendment No. 17 to Sewer Connection Charge Bylaw No. 8469

The Municipal Council of the City of Kelowna, in open meeting assembled, enacts as follows:

1. THAT Sewer Connection Charge Bylaw No. 8469 be amended by:

- (a) deleting **SCHEDULE 3 SEWER SERVICE CONNECTION AREA CHARGES** and replacing it with the following:

#### SCHEDULE 3

#### SEWER SERVICE CONNECTION AREA CHARGES

<u>Connection Charge Area</u>	<u>Area Number</u>	<u>Total Area Cost</u>	<u>Total Area SFE's</u>	<u>Cost / SFE (if pre-paid)</u>
Rio / Terrace	16	\$ 905,983	58	\$ 15,600
Rutland - North	20	Set to the LAS No. 20 Commutation price		\$ 6,900
Rutland -McKenzie Bench	21	Set to the LAS No. 21A Commutation price		\$ 7,100
Rutland - Central	22	\$ 7,021,762	567	\$ 12,400
Rutland - South-West	23	Set to the LAS No. 23 Commutation price		\$ 7,300
St. Amand / Chamberlain	25	\$ 901,354	42.4	\$ 21,300
Hall / Parsons	27	\$ 9,767,231	360.2	\$ 27,100
Okaview	28	\$ 10,365,104	471.9	\$ 22,000
Boppart	31	\$ 291,330	15	\$ 19,400
North End Industrial	32	\$ 3,850,000	1491	\$ 2,600
Cary Road	33	\$ 185,427	33	\$ 5,600
Sexsmith	35	\$ 3,075,311	64.8	\$ 47,500
Clifton Road North	36	\$ 439,178	34	\$ 12,900

- (b) Adding a new Map "A" North Rutland – Connection Area 20 as attached to and forming part of this bylaw;
- (c) Deleting the existing Map "A" McCurdy Sewer Connection Area #21 and replacing it with Map "B" McKenzie Bench Connection Area 21 as attached to and forming part of this bylaw.
- (d) Deleting the existing map titled "Central Rutland Sewer Service Connection Area #22" and replacing it with Map "D" Central Rutland – Connection Area 22 as attached to and forming part of this bylaw.



- (e) Deleting the existing map titled “Chamberlain Rd. Sewer Service Area No. 25/St. Amand Rd. Sewer Service Area No. 24” and replacing it with Map “E” Chamberlain/St. Amand – Connection Area 25 as attached to and forming part of this bylaw.
  - (f) Deleting the existing map titled “Fisher Rd. Sewer Service Area No. 26”.
  - (g) Adding a new Map “F” Hall/Parsons – Connection Area 27 as attached to and forming part of this bylaw.
  - (h) Deleting the existing map titled “Boppart Sewer Service Connection Area No. 31” and replacing it with Map “G” Boppart – Connection Area 31 as attached to and forming part of this bylaw.
  - (i) Adding a new Map “H” Sexsmith Road – Connection Area 35 as attached to and forming part of this bylaw; and
  - (j) Adding a new Map “J” Clifton Road North – Connection Area 36 as attached to and forming part of this bylaw.
2. This bylaw may be cited as “Bylaw No. 9701, being Amendment No. 17 to Sewer Connection Charge Bylaw No. 8469.”

Read a first, second and third time by the Municipal Council this 11<sup>th</sup> day of December, 2006.

Adopted by the Municipal Council of the City of Kelowna this    day of    , 2006.

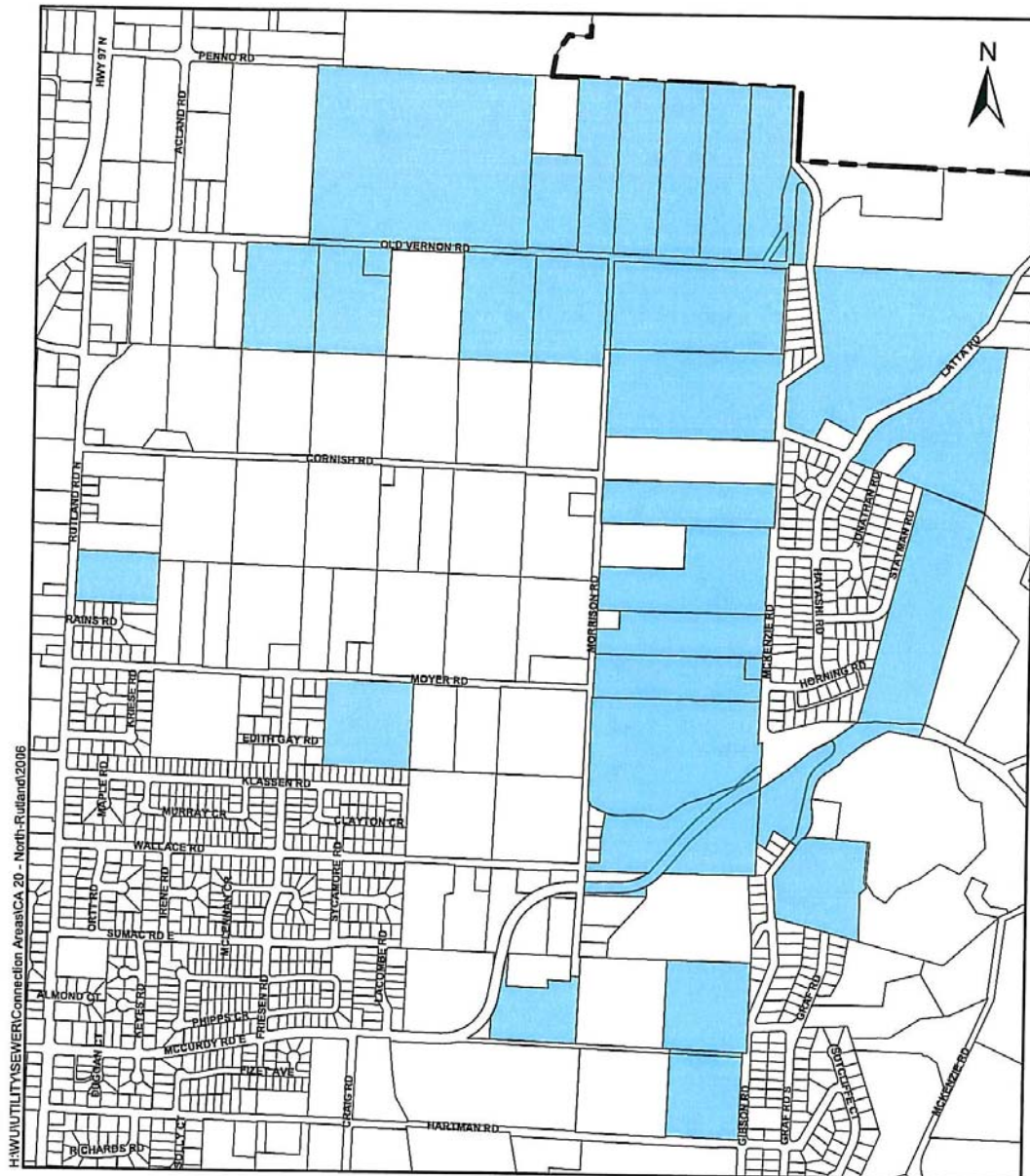
---

Mayor

---

City Clerk





# **NORTH RUTLAND - CONNECTION AREA 20** **MAP "A"**

## **Legend**

 Sewer Service Connection Area 20

REV.

SCALE: NTS





**Legend**

 Sewer Service Connection Area 21

SCALE: NTS



DATE: Nov. 2006





H:\WU\UTILITY\SEWER\Connection Areas\CA 22 - Central-Rutland\2006

**Legend**

Sewer Service Connection Area 22

**CENTRAL RUTLAND - CONNECTION AREA 22  
MAP "D"**

REV.

SCALE: NTS




DATE: Nov./2006





**CHAMBERLAIN / ST. AMAND - CONNECTION AREA 25**  
**MAP "E"**

Legend

 Sewer Service Connection Area 25

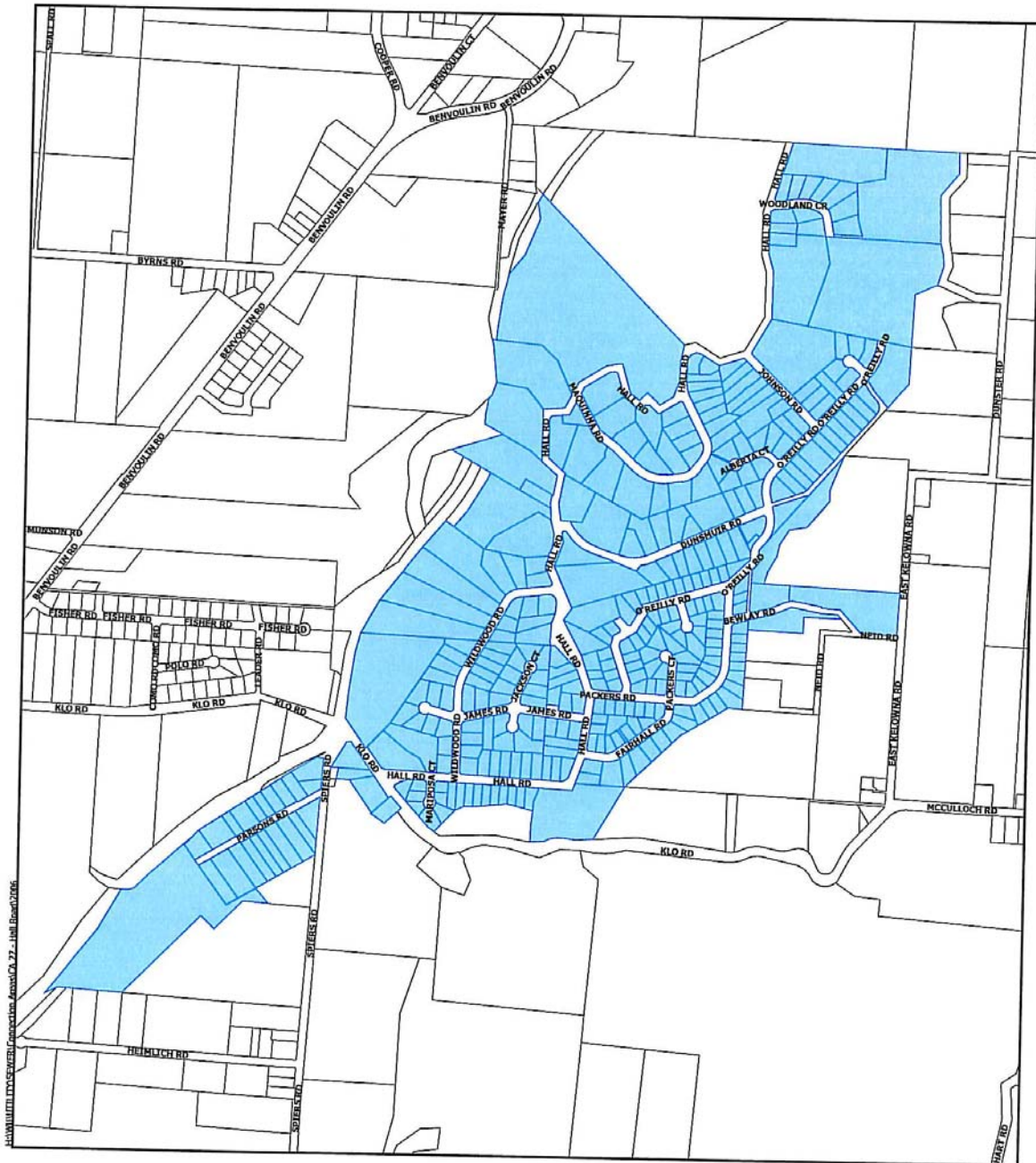
REV.

SCALE: NTS



DATE: Nov./2006





Legend  
 Sewer Service Connection Area 27

# **HALL / PARSONS - CONNECTION AREA 27** **MAP "F"**

REV.

SCALE: NTS



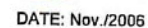
DATE: Nov./2006



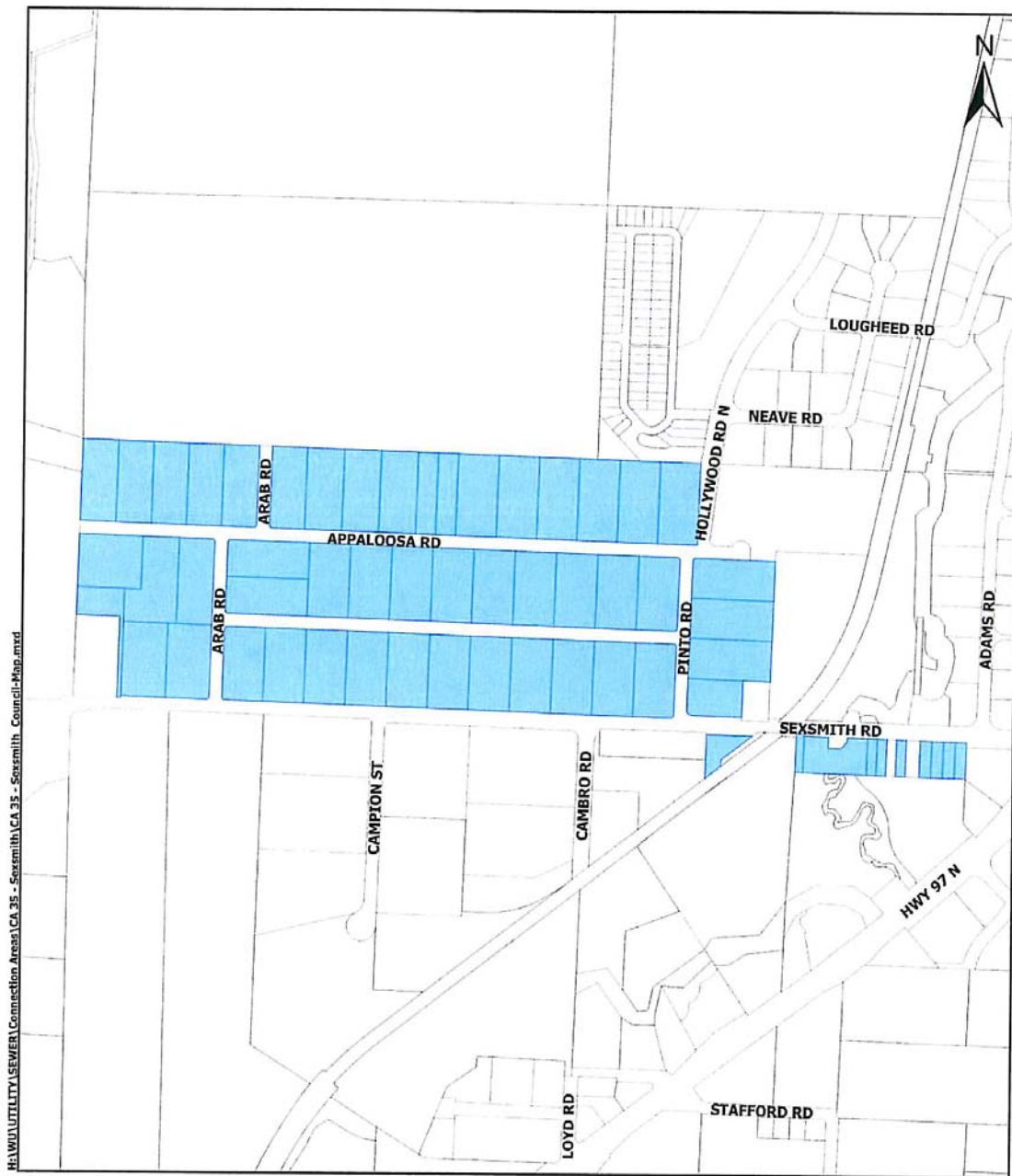
**Legend**

 Sewer Service Connection Area 31

SCALE: NTS







Legend

■ Sewer Service Connection Area 35

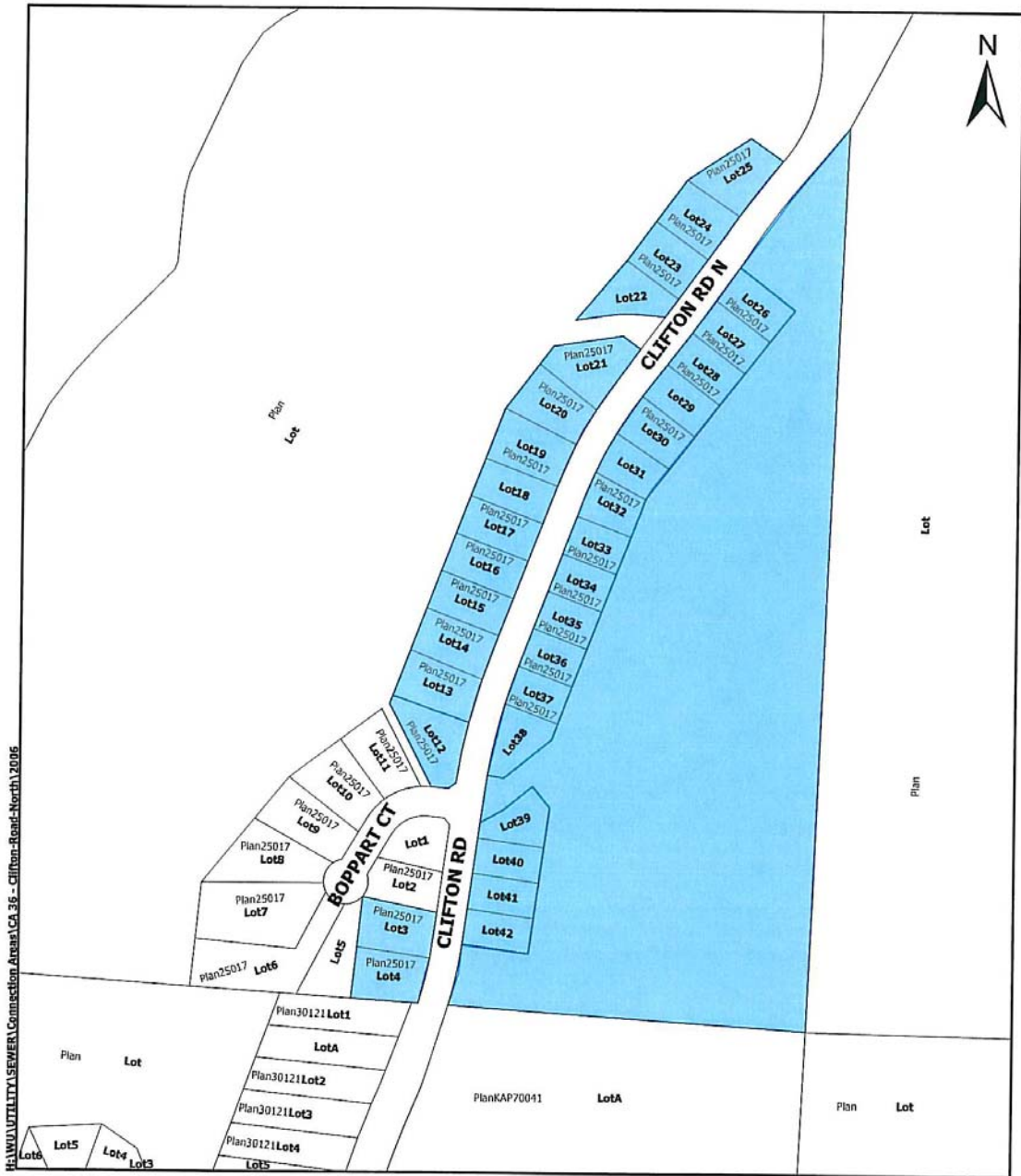
REV.

SCALE: NTS



DATE: Nov./2006





Legend  
Sewer Service Connection Area 36

**CLIFTON ROAD NORTH - CONNECTION AREA 36**  
**MAP "J"**

REV. SCALE: NTS

